

NO-RESERVE AG EQUIPMENT PRE-HARVEST AUCTION

LOTS BEGIN CLOSING:

MONDAY, AUGUST 21, 2023
STARTING AT 10:00 AM ^{CST}

ZIEGLER
AG EQUIPMENT

EQUIPMENT WILL BE LOCATED AT ZIEGLER AG EQUIPMENT LOCATIONS IN
IOWA, MINNESOTA, WISCONSIN & MISSOURI



BEN FREIDHOF
GENERAL MANAGER
ZIEGLER AG EQUIPMENT
(641) 745-5427



**ALL ITEMS SELL TO THE
HIGHEST BIDDER WITH
NO RESERVE!
NO BUYER'S
PREMIUM!**

AUCTIONEERS NOTE: Mark your calendars now to participate in Ziegler Ag Equipment's Pre-Harvest Auction. This equipment will be located at stores in IA, MN, WI & MO. This is a No Reserve Auction with No Buyer's Premiums! Please visit our website for detailed photos for each location. Inspections are welcome and encouraged during business hours. For any questions call Ben Freidhof, Ziegler Ag General Manager at (641) 745-5427. Dealerships will offer 1 hour of load out assistance free of charge, standard shop rate will apply after the 1 hour. Not responsible for accidents, errors or omissions. All items are sold as-is, with no guarantees or warranties.

AUCTION REPRESENTATIVES:

JOHN PROBASCO (641) 856-7355 • JIM HUFF (319) 931-9292 - WI LIC. #2934-52

MERIT AUCTIONS
"Specializing in Farm Real Estate & Ag Equipment"

Toll Free 833.273.9300 | Lic. #444.000611

WWW.MERITAUCTIONS.COM

TRACTORS

2018 CHALLENGER MT965E 4WD TRACTOR

PS trans., 6 hyd. outlets, large 1000 PTO, auto guide w/ TopCon receiver, HID lighting, strobe lighting, rear weights, 800/70R38 tires & duals, 2,277 hours, SN AGCC09965PJJNG1041, Location: Fergus Falls, MN, Stock # B15333

2017 CHALLENGER MT665E MFWD TRACTOR

CVT trans., w/ reverse shuttle, 4 hyd. outlets, 1000 PTO, luxury package, HID lighting, strobe lighting, Trimble NAV III controller & Trimble display, 480/80R50 rear tires & duals, 420/85R34 front tires & duals, 1,537 hours, SN AGCC0665KHNG1011, Location: DeForest, WI, Stock # EQ0064750

2017 CHALLENGER MT865E TRACK TRACTOR

PS trans., 6 hyd. outlets, large 1000 PTO, deluxe cab, LED lighting, front weights, Trimble CFX750 display, 36in. tracks, 3,578 hours, SN AGCC0865JHNKG1040, Location: Marshall, MN, Stock #EQ0064480

2017 CHALLENGER MT865E TRACK TRACTOR

PS trans., 5 hyd. outlets, 1000 PTO, deluxe cab, front weights, 36in. tracks, 3,247 hours, SN AGCC0865CHNKG1038, Location: Mankato, MN, Stock # EQ0064481

2014 JOHN DEERE 4066R MFWD TRACTOR

Curtiss cab, hydro trans., 2 hyd. outlets, 540 PTO, quick hitch, 16.9-24 rear tires, 10-16.5 front tires, sells complete w/ John Deere H180 loader, 84in. bucket, joystick control, 695 hours, SN 1LV4066RAHH100976, Location: Sheldon, IA, Stock # EQ0074390

2010 CHALLENGER MT865C TRACK TRACTOR

PS trans., 5 hyd. outlets, 59 GPM hyd. pump, deluxe cab, auto guide, front weights, 36in. tracks, 8,037 hours, SN AGCC0865VNWKG1001, Location: New Hampton, IA, Stock # EQ0072504

2009 CHALLENGER MT675C MFWD TRACTOR

CVT trans., 4 hyd. outlets, 1000 PTO, 3-pt., quick hitch, buddy seat, 480/80R50 rear tires & duals, 420/85R34 front tires, 2,574 hours, SN U111016, Location: Mankato, MN, Stock # EQ0058433

2004 CHALLENGER MT525B MFWD TRACTOR

cab, 16 spd. trans.w/ creeper, 3 hyd. outlets, 540 PTO, 3-pt., front weights, 460/85R38 rear tires, 320/85R34 front tires, 6,545 hours, SN N135032, Location: De Forest, WI, Stock # EQ0085071

2002 CHALLENGER MT565 MFWD TRACTOR

PS trans. w/ LH reverser, 4 hyd. outlets, 540/1000 PTO, 3-pt., air ride seat, buddy seat, front weights, 480/80R42 rear tires & no duals, hubs only, 380/85R30 front tires, 3,516 hours, SN L242010, Location: De Forest, WI, Stock # EQ0084139

1993 CATERPILLAR CH65C TRACK TRACTOR

PS trans., 4 hyd. outlets, bareback, 30in. tracks, showing, 4,604 hours, SN 2ZJ00553, Location: Altoona, IA, Stock # EQ0094911

1990 JOHN DEERE 4755 MFWD TRACTOR

PS trans., 3 hyd. outlets, 1000 PTO, quick hitch, front weights, front fenders, 20.8-38 rear tires, 18.4R26 front tires, 6,742 hours, SN RW4755P003984, Location: Sheldon, IA, Stock # EQ0084487

2020 MASSEY FERGUSON GC1723E TRACTOR MFWD, Hydro., 3-pt., 540 PTO, 3 hours, F18X8.50-10 front turf tires, R26X12.00-12 rear turf tires, SN AG3MGC230LKR00333, Location: Columbus MN, Stock # B17622



Visit our website often for updates and additional photos!

www.meritauctions.com



COMBINES

2021 JOHN DEERE S770 2WD COMBINE

ContourMaster feederhouse, CommandTouch multi speed drive, ProDrive trans. w/ HarvestSmart, Side Hill performance package, PowrCast tailboard, Gen 4 4600 Command Center, hopper extension, 26ft. unload auger, premium cab, HID lighting, 520/85R42 front tires & duals, 600/70R28 rear tires, 610 eng. hours, 490 sep. hours, SN 1H0S770SEM0815763, Location: Sheldon, IA, Stock # EQ0084690

2018 CLAAS LEXION 740TT PRWD COMBINE

Auto Contour, HD variable speed header drive, reverser, round bar concave, 3D leveling sieve, Turbo Chop Chopper, camera, Ag Leader Ready, auto pilot, 28 ft. auger, 36in. tracks, 750/65R26 rear tires, 2,366 eng. hours, 1,483 sep. hours, SN C7800531, Location: Altoona, IA, Stock # EQ0057383

2015 CLAAS LEXION 740TT TRACK COMBINE

PRWD, Auto Contour, HD variable speed header drive, reverser, auto pilot ready, round bar concave, 3D leveling sieve, 28 ft. Auger, MAV Chopper, Ag Leader ready, 36in. tracks, 759/65R26 rear tires, 1,831 eng. hours, 1,146 sep. hours, SN C6800599, Location: Chillicothe, MO, Stock # EQ0072968

2014 JOHN DEERE S680 2WD COMBINE

ContourMaster feederhouse, CommandTouch multi speed drive, ProDrive trans. w/ HarvestSmart, PowrCast tailboard, GSS3 2630 arm rest display, premium cab, HID lighting, SN 1H0S680SHE0767304, Location: New Hampton, IA, Stock # EQ0090986

2014 GLEANER S67 PRWD COMBINE

lateral tilt feederhouse, 4 spd. trans., power fold hopper, HID lighting, buddy seat, Gleaner C2100 monitor with TopCon receiver, HD Grain Package, 20.8R42 front tires & duals, 18.4R26 rear tires, 2,559 eng. hours, 2,071 sep. hours, One owner, SN AGCRS6700EHTV6135, Location: Madison, MN, Stock # EQ0035382

2012 JOHN DEERE S680 2WD COMBINE

ContourMaster feederhouse, CommandTouch multi speed drive, ProDrive trans. w/ HarvestSmart, PowrCast tailboard, chopper, & spreader, power fold hopper, GSS3 2630 arm rest display, premium cab, HID lighting, Lankota rear hitch, rear camera, 650/85R38 front tires & duals, 28LR26 rear tires, 2,805 eng. hours, 1,843 sep. hours, SN 1H0S680SCC0747568, Location: Marshall, MN, Stock # EQ0081751

2007 GLEANER R65 2WD COMBINE

Variable spd. feederhouse, lateral tilt feederhouse, reverser, 4 spd. trans., GTA1 Fieldstar Monitor, 480/80R42 front tires, 16.9-24 rear tires, 2,116 eng. hours, 1,508 sep. hours, SN HS62161, Location: Jackson, MN, Stock # EQ0067512

2009 LEXION 585R PRWD COMBINE

Variable spd. feederhouse, Auto Contour, 3D leveling sieve, reverser, 28 ft. auger, MAV Chopper, Ag Leader, 36 in. tracks, 750/60R26 rear tires, SN 57800885, Location: New Hampton, IA, Stock# EQ0080761

2006 LEXION 570R PRWD COMBINE

Auto Contour, Variable spd., feederhouse, reverser, 26 ft. auger, MAV Chopper, 3D sieve, power fold hopper, 3,828 eng. hours, 2,846 sep. hours, SN 57600394, Location: Altoona, IA, Stock # EQ0076106

2006 LEXION 570R PRWD COMBINE

Auto Contour, Variable spd., feederhouse, Quantimeter yield meter, chopper & spreader, 3D sieve, power fold hopper, 620/70R42 front tires & duals, 28LR26 rear tires, 3,227 eng. hours, 2,774 sep. hours, SN 57600403, Location: Chillicothe, MO, Stock # EQ0089052

2005 LEXION 560R 2WD COMBINE

Auto Contour, Variable spd., feederhouse, chopper & spreader, power fold hopper, 520/85R42 front tires & duals, 500/85R24 rear tires, 3,525 eng. hours, 2,197 sep. hours, SN C0LOO560J57800078, Location: Columbus, MN, Stock # EQ0087290



**BIDDING INFORMATION AVAILABLE @
WWW.MERITAUCTIONS.COM!**



PLATFORMS

2013 MASSEY FERGUSON 9250 DYNAFLEX 40FT. DRAPER HEAD
single point hookup, dual drive, SN AGCCFDH00CHD01691, Location: Ada, MN, Stock # EQ0077657

2012 MASSEY FERGUSON 9250 DYNAFLEX 40FT. DRAPER HEAD
single point hook up, dual drive, SN AGCM92500DHD01361, Location Mankato, MN, Stock # EQ0080807

2012 GLEANER 9250 DYNAFLEX DRAPER HEAD
30 ft. single point hookup, dual drive, one owner, SN AGCR92500CHD01573, Location: New Hampton, IA, Stock # EQ0028871

2011 CHALLENGER DYNAFLEX 30FT. DRAPER HEAD
single point hookup, dual drive, SN AGCMFDH00BHD01512, Location: Marshall, MO, Stock # EQ0074523

2012 CLAAS MAXFLEX 1200 40FT. PLATFORM
dual drive, full fingered auger, single point hookup, Auto Contour, SN 53500311, Location: Sioux City, IA, Stock # EQ0072019

2015 CLAAS MAXFLEX 1200 40FT. PLATFORM
dual drive, full fingered auger, single point hookup, SN 53500577, Location: Fergus Falls, MN, Stock # EQ0046881

2015 CLAAS MAXFLEX 1200 40FT. PLATFORM
dual drive, full fingered auger, single point hookup, Crary air reel, SN 53500628, Location: Fergus Falls, MN, Stock # EQ044652

2012 CLAAS MAXFLEX 1200 40FT. PLATFORM
dual drive, full fingered auger, single point hookup, SN 53500314, Location: Ft. Dodge, IA, Stock # EQ0073771

2011 CLAAS MAXFLEX 1200 40FT. PLATFORM
full fingered auger, single point hookup, Crary air reel, SN 53500197, Location: De Forest, WI, Stock # EQ0077051

2007 LEXION F540 40FT. PLATFORM
full fingered auger, AWS single fan wind reel, SN 44100486, Location: Mankato, MN, Stock # EQ0061993

2006 LEXION F540 40FT. PLATFORM
dual drive, full fingered auger, single point hookup, SN 44100296, Location: Ft. Dodge, IA, Stock # EQ0077233

2007 LEXION F540 40FT. PLATFORM
full fingered auger, single point hookup, Crary Air Reel, SN 44100484, Location: Ft. Dodge, IA, Stock # EQ0079366

2009 GLEANER 8200 30FT. FLEX PLATFORM
full fingered auger, single point hookup, Crary Air Reel, SN HUW8281, Location: New Hampton, IA, Stock # EQ0046766



CORNHEADS

2020 DRAGO 830 II 8 ROW 30IN. CORN HEAD

Roll-A- Cones, knife rolls, hyd. deck plates, SN 260218, Location: Ft. Dodge, IA, Stock # EQ0080899

2018 GERINGHOFF RD1622 ROTA DISC ELETE XL 16 ROW 20IN. CORN HEAD

Insight Headsight height sense, this head has been used as a demonstrator, SN 1101800061622, Location: Willmar, MN, Stock # B15537

2013 LEXION 1230 12 ROW 30IN. CORN HEAD

Auto Contour, knife rolls, hyd. deck plates, single point hookup, stalk stomper, SN 91802189, Location: De Forest, WI, Stock # EQ0077189

2013 GERINGHOFF RD1630 CORN HEAD

Roto Disc, Auto Contour, SN 110130443163000, Location: Ft. Dodge, IA, Stock # EQ0077232

2013 HARVESTEC 5308C 8 ROW 30IN. CORN HEAD

hyd. deck plates, single point hookup, Auto Pilot, Auto Contour, SN 5308C, Location: Madison, MN, Stock # EQ0079979

2012 GLEANER 3000 8 ROW 30IN. CORN HEAD

Lateral Tilt, ElectricDeck Plates, single point hookup, intermeshing knife rolls, stalk stompers, SN R830T0CHCH1268, Location: Maryville, MO, Stock # EQ0045724

2010 FANTINI L02 12 ROW 30IN. CORN HEAD

hyd. deck plates, knife rolls, Headsight, Trusight, Lexion 700 hookups, SN 10612, Location: Sheldon, IA, Stock # EQ0084270

2009 JOHN DEERE 612C 12 ROW 30IN. CORN HEAD

Roll-A- Cones, RowSense, stalk stompers, SN H0612CX730811, Location: Altoona, IA, Stock # EQ0081146

2009 JOHN DEERE 608C 8 ROW 30IN. CORN HEAD

ContourMaster, hyd. deck plates, RowSense, Yield 360 Rolls, stalk stompers, SN H0608CX731722, Location: Altoona, IA, Stock # EQ0086785

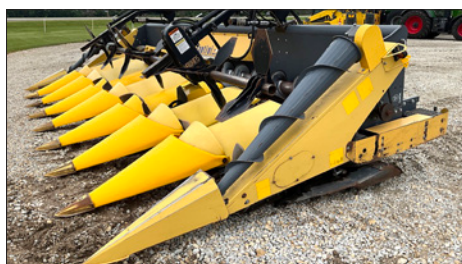
2009 FANTINI L02 8 ROW 30IN. CHOPPING CORN HEAD

Electric Deck Plates, Roll-A-Cones, Hawkins corn reel, Gleaner R series Hookups, SN 9620, Location: New Hampton, IA, Stock # EQ0072967

LOTS BEGIN
CLOSING:

**MONDAY,
AUGUST 21, 2023**

STARTING AT
10:00 AM CENTRAL



ONLINE BIDDING
PROVIDED BY: **proxibid**

**TO BID,
VISIT OUR WEBSITE:**

www.MeritAuctions.com

FORAGE HARVESTERS

2012 CLAAS JAGUAR 960 4WD SELF PROPELLED FORAGE HARVESTER
kernel processor, instructional seat, HID lighting, Auto Lube, strobe lighting, 500 gal. tank, 710/75R34 front tires, 600/65R28 rear tires, 4,416 eng. hours, Please note cutter hours have been reset, SN 49403019, Location: De Forest, WI, Stock # EQ0075990

2012 CLAAS ORBIS 600 8 ROW FOLDING CHOPPING FORAGE HEAD
SN 65901978, Location: De Forest, WI, Stock EQ0077228

2012 CLAAS PU380 12FT. FORAGE PICKUP HEAD
SN 90601597, Location: De Forest, WI, Stock # EQ0077230



LOTS BEGIN CLOSING:

**MONDAY,
AUGUST 21, 2023**

**STARTING AT
10:00 AM CENTRAL**

SPREADERS & SPRAYERS

2018 TERRAGATOR TG9300B AIR MAX PRECISION 2, AIR FLOW SPREADER
CVT trans., Accuboom, Auto Boom, 70ft. boom, granular bins, dual SS chain, roll tarp, leather seat, camera, Raven Viper 4 monitor, RS1, 1050/50R32 tires, 2,817 hours, SN AGCA9300HJNS21040, Location: New Hampton, IA, Stock # EQ0093628

2015 AG CHEM ROGATOR RG1300B SELF PROPELLED SPRAYER
Ag Leader Integra, 120ft. boom, 20in. spacing, 1,300 gal. SS tank, Chem. Inj., Poly Chem. eductor, 4 wheel steer, auto steer, air ride cab, 2,086 hrs. SN AGCA1300PFNSL1118, Location: St. Cloud, MN. Stock # EQ0044580

SCHABEN SF8500 PULL TYPE SPRAYER
90ft. boom, 1,200 gal. tank, single nozzle bodies, 20in. spacings, chem. inductor, hyd. product pump, 3 section shutoff, Teejet 844E controller, 320/90R46 tires, SN 100698, Location: Sioux City, IA, Stock # EQ0084709

GVM 1150-G PROWLER DRY FERTILIZER SPREADER
Cummins engine, auto trans., sells complete w/ Ag Force FL3024 SS box, Raven 750 monitor, Raven SmarTrax system, 380/90R46 tires, 9,853 hours, SN NH441375fC10203, Location: New Hampton, IA, Stock # EQ0099253

1998 AG CHEM ROGATOR 854 SELF PROPELLED SPRAYER
80ft. boom, 800 gal. SS tank, triple nozzle bodies, 20in. spacings, foam marker, freshwater tank, 5 section shutoff, Ag Leader monitor, Raven lightbar, 380/90R46 tires, 4,409 hours, SN 8530578, Location: New Hampton, IA, Stock # EQ0095108



YOU WON'T WANT TO MISS THIS AUCTION!

GRAIN HANDLING EQUIPMENT

2009 BRENT 782 GRAIN CART

corner auger, camera, roll tarp, hyd. spout, large 1000 PTO, 30.5L-32 tires, SN B25430120, Location: Mankato, MN, Stock # EQ0062956



2019 BRANDT 5200EX GRAIN VAC

rubber & SS suction hose, 1000 PTO, 167 hrs. SN 13240519, Location: Chillicothe, MO, Stock # EQ0093284

BALERS

2022 MASSEY FERGUSON RB4180V ROUND BALER

E-pro, XtraCut, auto lube, net wrap, 540 PTO, monitor, 6,207 Bales, 500/55/20 tires, SN WAM01764CMW002055, Location: De Forest, WI, Stock # EQ0085072



2014 MASSEY FERGUSON 2956 ROUND BALER

net wrap & twine tie, kicker, auto cycle, 1000 PTO, monitor, 21.6-16.1 tires, 7,230 Bales SN AGCM2956AEHR13198, Location: Madison, MN, Stock # EQ0088994

LARGE SELECTION OF AGCO TECHNOLOGY, COMBINE PARTS, SPRAYER PARTS & RELATED ITEMS, TIRES, ETC. THIS WILL INCLUDE APPROXIMATELY 150-200 LOTS. THESE ITEMS WILL BE SOLD IN A SEPARATE RING.



NO-RESERVE AG EQUIPMENT PRE-HARVEST AUCTION

MERIT AUCTIONS

PO BOX 509 | 4502 AVENUE O
FT. MADISON, IA 52627



FIRST CLASS
U.S. POSTAGE
PAID
QUINCY, IL
PERMIT 23
62301

ZIEGLER
AG EQUIPMENT

BEN FREIDHOF
GENERAL MANAGER
ZIEGLER AG EQUIPMENT
(641) 745-5427

LOTS BEGIN CLOSING:
MONDAY,
AUGUST 21, 2023
AT 10:00 AM CST



AUCTION REPRESENTATIVES: JOHN PROBASCO (641) 856-7355 • JIM HUFF (319) 931-9292 - WI LIC. #2934-52

EQUIPMENT WILL BE LOCATED AT ZIEGLER AG EQUIPMENT LOCATIONS IN
IOWA, MINNESOTA, WISCONSIN & MISSOURI

Bidding information available @ www.meritauctions.com!